

CLASS

by Kirsty Eyre



Nigel and his girls from 2006 show (Photo: Anil Chopra)

CLASS, a box office sell-out success last year, will be performed at Network Theatre this summer in preparation for hitting the Edinburgh Fringe (see www.class-stage.co.uk for more information).

CLASS is a downmarket strip-joint run by struggling entrepreneur, Nigel, whose whole life is a lie. Can he convince the uber-classy Elise that he runs his mate's award winning art restaurant? Can he convince his mate that he's not knocking off his waitress? And can he convince Elise to marry him? After all, she's so much better than him. Does an understanding of dinner etiquette and a good education give you a green card to 'class' regardless of whether you cheat or lie? And just who exactly is lying? All is revealed at C to the L to the ASS, CLASS!

London Performances: 17-21 July 2007 at 7.30pm
Edinburgh Performances at Augustine's Venue 152: 14-27 (not 20) August at 8.30pm

Tickets £8 Lambeth & Southwark Residents £7. For latest information and to book tickets (online booking fee) go to www.networktheatre.org
Doors open 30 minutes before each performance — why not relax in our licensed bar, which is open before and after the show



Subject to licence

HUIS CLOS

by Jean-Paul Sartre
 Directed by Robin Lansman

Sartre's 1944 existentialist play. English translations have been performed under the titles *In Camera*, *No Way Out* and *Dead End*, though a direct translation from old French is *Closed Door*.

The play is the source of the famous Sartrean maxim "Hell is other people".

Three individuals, all of whom have died by one means or another, are shown into a room with no windows, no mirrors and only one door. They discover that they have arrived in a hell in which each of them becomes the other's torturer by probing each other's sins, desires and unpleasant memories. There appears to be no way out ...

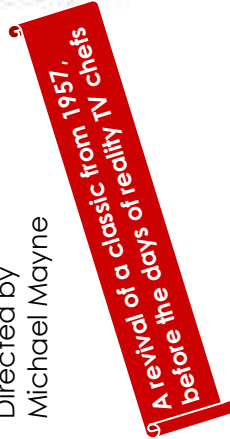
Each performance will be followed by a cast and audience discussion, with drinks available from the bar.

Reading: 3 July 2007 at 7pm
Auditions: 10 & 12 July 2007 at 6.30pm
Performances: 3-6 October 2007 at 7.30pm

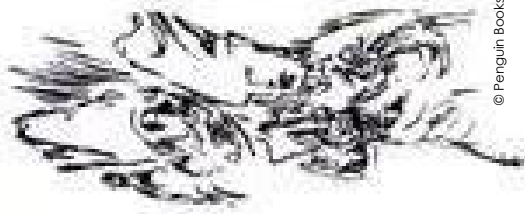
Tickets £8 Lambeth & Southwark Residents £7. For latest information and to book tickets (online booking fee) go to www.networktheatre.org
Doors open 30 minutes before each performance — why not relax in our licensed bar, which is open before and after the show

The Kitchen

by Arnold Wesker
 Directed by Michael Mayne



Flashing, illuminating, moving, funny, passionate, authentic... Bernard Levin, *Daily Express*



© Penguin Books

In the basement kitchen of a large restaurant, the chefs, waitresses, and kitchen porters, slowly begin the day preparing to serve lunch. The central story tells of a frustrated love affair between a high-spirited, young, German chef, PETER, and a married English waitress, MONIQUE.

PART ONE slowly builds to a frenzy of serving. PART TWO is a lyrical period - the kitchen porters and chefs linger after serving lunch, and talk about their dreams of a better life. In PART THREE everyone returns for the slower evening service during which PETER, finally turned down by MONIQUE, goes berserk and smashes the gas leads to the ovens.

The proprietor, bewildered by PETER'S violence, the nature of which he cannot understand, asks his workers what more is there to life than work, money and food. [source: www.arnoldwesker.com]

Reading: 4 September 2007 at 7pm
Auditions: 18 & 20 September 2007 at 6.30pm
Performances: 5-8 December 2007 at 7.30pm

Tickets £8 Lambeth & Southwark Residents £7. For latest information and to book tickets (online booking fee) go to www.networktheatre.org
Doors open 30 minutes before each performance — why not relax in our licensed bar, which is open before and after the show

Who are the Network Theatre Company?

Network Theatre is the home of the Network Theatre Company. This amateur company was originally founded as the Southern Railway Dramatic Society in 1939 and has been going strong ever since. Our theatre is leased from Spacia, part of Network Rail, and we thank them for their continued support.

What do you do?

We produce a wide range of theatre from classic plays to new writing, from comedy to cry-your-eyes-out, mixed media and musicals. The list is endless. Recent Network Theatre Company productions have also been seen at the Edinburgh Fringe Festival, The Rosemary Branch in Islington and the Prague Fringe Festival.

We also organise regular social events, workshops and play readings, so it's a great way of meeting new friends and keeping in touch with old ones.

How can I get involved?

Members and non-members alike are welcome to read or audition for a part. You will however need to be a member to participate in a production. We don't just want performers – we also welcome directors, backstage team (e.g. costume, props, lighting, sound, stage crew) and people willing to help out front of house with the box office and bar.

We're a friendly and relaxed group; we don't believe in holding nerve-wracking auditions in order for you to join. All you need to do is send us an email at info@networktheatre.org with your contact details and we'll send you a form – or pick up one at the theatre or download one from our website.

We survive by subscriptions and box office takings, so if you would like to become a member you will need to pay a small membership fee. There is an additional fee if you participate in a production.

We hope to see you at Network Theatre soon!

Network Theatre:

Network Theatre is a private members club, licensed for regulated entertainment and the supply of alcohol to members and their guests. Non-members will have to register as guests at the door.

We have a licensed bar, which opens before and after the show, as well as during the interval.

For more information:

You can check details of all our events, including auditions and performances, on our website at www.networktheatre.org, where you can also download a membership application.

You can join our e-mail list by sending an e-mail to us at subscribe@networktheatre.org. We won't pass on your details.

How to find the theatre:

We are at
246A Lower Road
Waterloo
London SE1 8SJ

We're not on maps, but you can find Lower Road under Waterloo Station, off Waterloo Road just north of Holmes Terrace, opposite Sainsbury's.

Enquiries: E-mail us at info@networktheatre.org or call 020 7582 8400

Tickets: Buy online (fee) at www.networktheatre.org or ask one of our members. All seats unreserved.

USE OUR THEATRE: daytimes, evenings or weekends. Network Theatre is available for use by other groups. The diary fills up very quickly, so please contact us as soon as possible to avoid disappointment. See our website at www.networktheatre.org for more details.

07/145/6 © Network Theatre Company. Rights of admission reserved. Subject to company rules. Information correct at time of writing — please see our website for the latest. E&OE.

network THEATRE

July-
December
2007

A hidden gem
under the arches of
Waterloo Station
London

Network Theatre Company presents

Class

by Kirsty Eyre
17-21 July



Huis Clos

by J-P Sartre
3-6 October



The Kitchen

by Arnold Wesker
5-8 December



WWW.NETWORKTHEATRE.ORG

