

COMING SOON AT NETWORK THEATRE

Opposites Attract: 1-4 October 2008

by Bruce Kane, directed by Network Theatre members

Executive Director: Michael Mayne



A one act comedy play about love, romance, infidelity, emotional masochism, envy, therapy, bad sex, letting go, getting caught and all the other things that make modern relationships so much fun. Within every disastrous relationship, the seeds of destruction are planted long before the people even meet.

The play is made up of 11 vignettes including but not limited to a passionate, yet disastrous relationship between two emotional masochists; an open sexual partnership that almost goes under when one partner admits he hasn't been cheating; to a grass is always greener threesome in which two women pine for what the other has, only to get it.

The Three Musketeers: 3-6 & 10-13 December 2008

by Willis Hall adapted from the novel by Alexandre Dumas,

directed by Leigh Shine



Reading: 18 September at 7.00 p.m.

Auditions: 23 September at 6.30 p.m.
25 September at 6.30 p.m.

Willis Hall brings Dumas' swashbuckling tale to the stage in a lively, tongue-in-cheek version of the original book. Set between 1625 and 1628 (nearly half past four), some of the characters are based on genuine people in history, while others are purely fictional. Slick, sexy and full of sword fighting, this splendid romp sees the director take some serious seasonal *liberté* with the story. Awful fun, and fun for all!

network THEATRE

HOME OF THE NETWORK THEATRE COMPANY

iff

A new play by Andrew N. Hill

23 – 26 July 2008 at 7.30pm

Network Theatre
246A Lower Road, Waterloo, London SE1 8SJ
www.networktheatre.org

From the Chairman

Welcome to the Network Theatre and the first ever full staging of *iff*.

This production continues our commitment to new writing, following in the footsteps of *Karaoke Wedding* and *Class*, both of which have enjoyed successful runs after their Network Theatre premières, at the Union Theatre and the Edinburgh Fringe respectively.

Though this is not Nigel Williams' first time as a director, I extend a warm welcome to Andrew Mell, David Fraser, Eunyong Sung and Judith Denwood for whom this is their first production under the arches. I do hope that this will be the first of many Network productions.

We have every intention of continuing to keep amateur theatre alive and kicking in Central London and encourage new writing, as well as mounting productions by established playwrights. Information about our forthcoming productions can be found in this programme or on our website at www.networktheatre.org. Readings and auditions are open to all – you do not have to be a member, so please put the dates in your diary and come along.

Thank you for supporting us – we would not be here without you! The Network Theatre exists thanks to the efforts of its members and friends. If you would like to become a member of the Network Theatre Company or help in the maintenance and improvement of the theatre itself through the Arch 200 Club, do please pick up a membership form.

Do enjoy the evening and don't forget our fully licensed Green Room bar which will be open before curtain up, during the interval and after the show for your refreshment and pleasure.

David Murray

Chairman, Network Theatre Company

July 2008

Network Theatre Company Membership

Full Membership at £100

During the period of your membership:

- You can participate in all Network Theatre Company productions subject to audition or invitation from the Director.
- You will be entitled to concession rates at certain Network Theatre Company Special Events.
- You will receive one copy of each Network Theatre Company newsletter published.

Basic Membership at £25

During the period of your membership:

- You can only take part in a Network Theatre Company production by payment of an additional participation fee of £25 for each production subject to a maximum of £100 in any membership year, and subject to audition or invitation from the Director. Lower participation fees apply to backstage and technical crew.
- You will receive one copy of each Network Theatre Company newsletter published.

For further information about Network Theatre Company membership, please see our website www.networktheatre.org or pick up a membership application form in the Green Room.

Or you can contact our Membership Secretary, Graham Harris by e-mail at info@networktheatre.org

Director's Notes

In April 2007, I was in the cast of the hugely successful *Karaoke Wedding* at the Union Theatre. The show had had its origins in a community piece developed from scratch by the Network Theatre Company. I was explaining the show's origins to one of my fellow cast members when he mentioned that he had written a play that had never been performed. I read it, was intrigued by it and organised a reading by Network members. The response was overwhelmingly in favour of putting *iff* on stage. I have been fortunate in being able to put together a cast and crew who have risen to all the usual challenges of staging new writing coupled with the particular challenges of putting London and New York on stage simultaneously. My thanks go to them and to Andrew N. Hill who has been a mercifully understanding writer.

Nigel Williams

The action takes place in Alan and Olivia's home in Hampstead, North London and in New York, in the apartment of John and Gemma, and on the streets.

There will be one interval of 20 minutes

Production Team

Set	Eunyoung Sung
Lighting design	Lynn Jeong
Sound designer and operator	David Harvey
Lighting operator	Ben Robb
Carpenter	David Murray
Stage Manager	Rhyll Davis
Director	Nigel Williams

With thanks to –

George England for her help with costumes, Mark Patterson for gathering the newspapers, Mike Harding and Kay Murray for the toys, Gary Cross for the vases, and Kirsty Eyre for the programme.

The Cast



Andy Bradshaw: Alan Peterson, a writer

Andy has previously acted in a professional capacity and has a list of stage credits to his name, which you can view on his Facebook entry if you're curious (and have nothing better to do!). He last trod Network's boards in boxer shorts and a Tarzan apron in *The Suburban Spaceman* and is relieved to be fully clothed for this production!



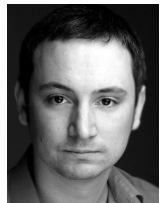
Emily Godowski: Gemma Hale, NYPD Sergeant

Emily is making a late return to the stage after various stints acting and directing at Manchester University. She enjoyed the thrill of joining a large cast for *The Kitchen* last December and has been an avid supporter of Network Theatre ever since. The opportunity to play a Noo York tough cookie with a side-arm was irresistible!



Sharan Hunjan: Olivia Peterson, Alan's wife

Sharan joined Network last year as a sassy waitress in *The Kitchen* and went on to appear in *The Suburban Spaceman* as a silver alien amongst other things! She has performed in many productions with the Carlton Players, which include *Popcorn*, *Departures*, *Time to Kill* and *Dracula*.



Alex Raskovic: Mark Tranchard, NYPD Lieutenant

Alex joined Network last year for *Class*, which had a highly successful run at Edinburgh Fringe. Alex trained in using drama for social healing, practising amongst Indian tribal communities. He is a member of the Actor Centre and will soon be leaving Network to train at the Impulse Theatre Company. He wishes all at Network well. He has appeared in films (*Sweeny Todd*). Oh and he helped build Wembley Stadium ☺



David Fraser: Harvey Cooper, NYPD Captain

David is new to the Network Theatre. He has starred in three short films; narrated the UK independently released documentary film, *Mothersland*, last summer and starred in and cast the play, *Shushanik*, performed at the Baron's Court Theatre.



Michael Mayne: Federal Agent Jackson

Michael has been at Network for four years playing a variety of parts, from a boy in *Blue Remembered Hills* to Shylock in *The Merchant of Venice*. He directed *Cold Comfort Farm* and *The Kitchen*, as well as *Not about Heroes* and *Lysistrata*, which he took to Edinburgh and Prague respectively. Michael was a professional actor until 27 with stage, film and TV credits.



Ursula Smyth: Julia Fraser, Jim's wife

Ursula, a Network regular, has found herself cast in a range of unpleasant female roles! Last summer saw her play a licentious lesbian in the Sartre production of *Huis Clos* and this year, in *iff*, she's an assiduous actress stuck in an acrimonious relationship with her husband (Alan's literary agent) Jim. Just watch her give that poor man the evil eye!



Robin Lansman: Jim Fraser, Alan's literary agent

Robin Lansman - an osteopath by day, has directed several shows over the last 3 years at Network, and elsewhere and wanted a small role just to keep his hand in! His first ever show at Network was *Two Planks and a Passion*, also directed by Nigel - the experience was so good he has come back for more.



Andrew Mell: John Sinclair, Gemma's partner

This is Andy's first appearance in a Network Theatre production. The last time he was on stage was about five years ago in college when he performed in *Arcadia* and *Twelfth Night*. Andrew is enjoying treading the boards once more and the challenge of learning how to tawk Noo Yawk.



Imelda Maguire: Mandy, Gemma's sister

Imelda has been with Network for two years, during which she played a dessert chef in *The Kitchen*, a stripper in *Class* and a stag in *Karaoke Wedding*. Imelda is also with other companies and has dabbled with comedy improvisation. She ran the London Marathon after back to back shows before stage managing for *Humble Boy*.



Judith Denwood: Officer Jacobs & Hospital Doctor

Judith has just joined Network Theatre and this is her first appearance. She has not done any acting since her school days and is very pleased to have been given the opportunity to play two roles in *iff*!